

Geometry Unit

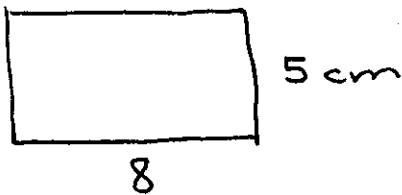
Practice Packet Lesson 1*

* Lesson 1 also includes geometry on coordinate plane; use HW to further practice those types of problems*

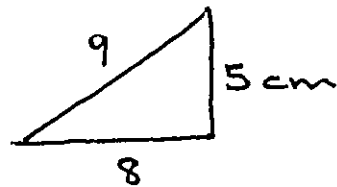
Lesson 1:

Find area and perimeter of each.

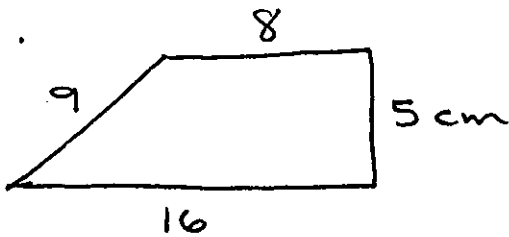
1.



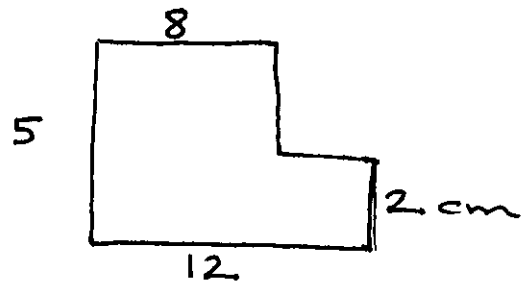
2.



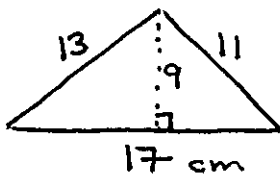
3.



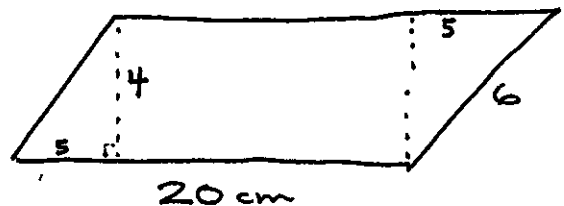
4.



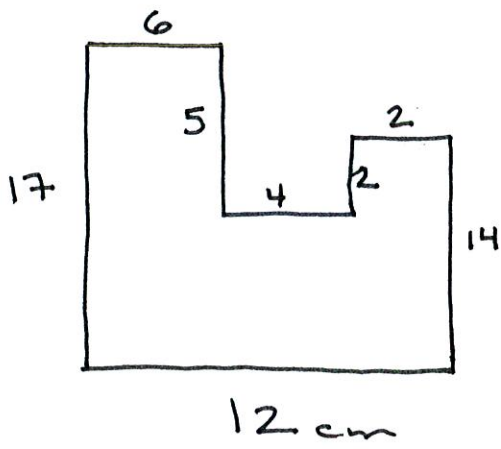
5.



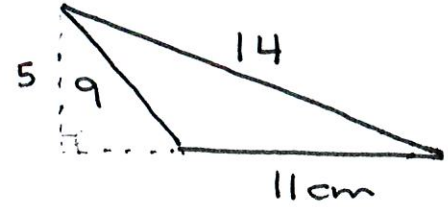
6.



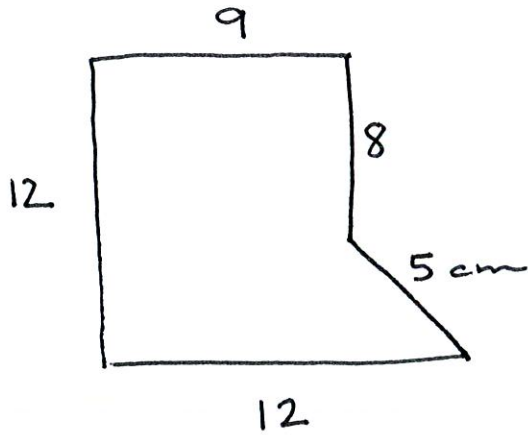
7.



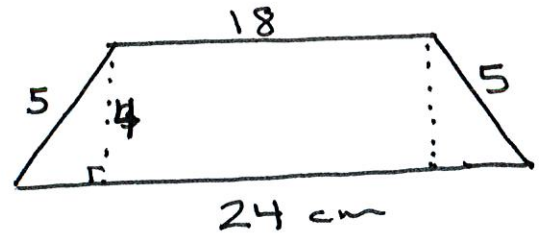
8.



9.

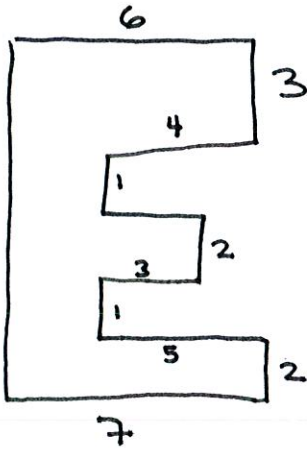


10.

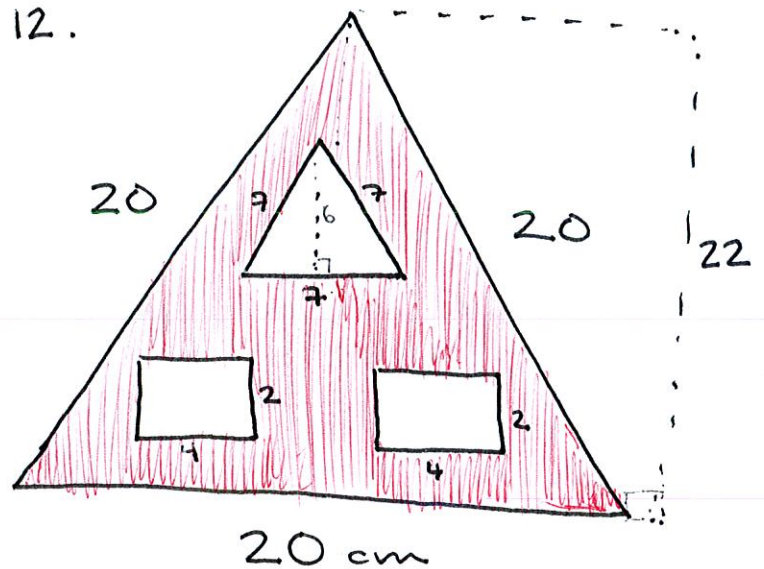


Challenge

11.



Just area of shaded.



1. $A = 40 \text{ cm}^2$
 $P = 26 \text{ cm}$

2. $A = 20 \text{ cm}^2$
 $P = 22 \text{ cm}$

3. $A = 60 \text{ cm}^2$
 $P = 38 \text{ cm}$

4. $A = 48 \text{ cm}^2$
 $P = 34 \text{ cm}$

5. $A = 76.5 \text{ cm}^2$
 $P = 41 \text{ cm}$

6. $A = 80 \text{ cm}^2$
 $P = 52 \text{ cm}$

7. $A = 178 \text{ cm}^2$
 $P = 62 \text{ cm}$

8. $A = 27.5 \text{ cm}^2$
 $P = 34 \text{ cm}$

9. $A = 114 \text{ cm}^2$
 $P = 46 \text{ cm}$

10. $A = 84 \text{ cm}^2$
 $P = 52 \text{ cm}$

11. $A = 46 \text{ cm}^2$
 $P = 46 \text{ cm}$

12. $A = 183 \text{ cm}^2$
 $P = \times$

Geometry Unit
Practice Packet
Lesson I